



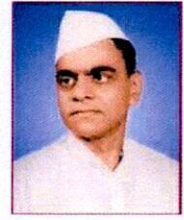
Janata Shikshan Sanstha's

Kisan Veer Mahavidyalaya, Wai

DEPARTMENT OF MARATHI

ATTAINMENT – 2019 -20

CLASS – B.A-III



Level 0	Percentage of student scoring 45 % and above marks is equal to 0 %						
Level 1	Percentage of student scoring 45 % and above marks is greater than 0% but less than 20 %						
Level 2	Percentage of student scoring 45 % and above marks greater than or equal to 20% but less than 40 %						
Level 3	Percentage of student scoring 45 % and above marks greater than or equal to 40 %						
Level of attainment by Direct Method (Internal Evaluation and University Exam)							
Class : B.A. III (Mar) Sem V							
Total no. of students enrolled : 20							
Name of the paper/course	Internal Evaluation			University Exam			
	No. of students scoring 45% or more in Home Assignment	% of students Scoring more than 45 % or more in Home Assignment	Level of Attainment (a)	Total No. of Appeared students	No. of student scoring 45 % or more marks	% of students Scoring more than 45 % or more marks	Level of Attainment
Paper VII	20	100	3	20	9	45.0	3
Paper VIII	20	100	3	20	13	65.0	3
Paper IX	20	100	3	20	16	80.0	3
Paper X	20	100	3	20	19	95.0	3
Paper XI	20	100	3	20	14	70.0	3



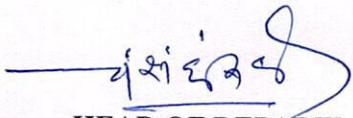
Class : B.A. III (Mar) Sem VI

Total no. of students enrolled : 20

Name of the paper/ course	Internal Evaluation			University Exam			
	No. of students scoring 45% or more in Home Assignment	% of students Scoring more than 45 % or more in Home Assignment	Level of Attainment (a)	Total No. of Appeared students	No. of student scoring 45 % or more marks	% of students Scoring more than 45 % or more marks	Level of Attainment
Paper XII	20	100	3	20	10	50.0	3
Paper XIII	20	100	3	20	12	60.0	3
Paper XIV	20	100	3	20	14	70.0	3
Paper XV	20	100	3	20	13	65.0	3
Paper XVI	20	100	3	20	14	70.0	3
Level of attainment by Indirect Method (Placement, Self Employed, Progression)							
Name of method	No. of students enrolled	No. of students	% of students	Total %	Level of Attainment		
Placement	20	0	0	25	2		
Progression	20	5	25				
Self employed	20	0	0				




Name of Course/ Paper	Attainment level in Sem V		Attainment level in Sem VI		Average level of Attainment
	Internal Evaluation	University Examination	Internal Evaluation	University Examination	
Paper VII	3	3	NA	NA	3
Paper VIII	3	3	NA	NA	3
Paper IX	3	3	NA	NA	3
Paper X	3	3	NA	NA	3
Paper XI	3	3	NA	NA	3
Paper XII	NA	NA	3	3	3
Paper XIII	NA	NA	3	3	3
Paper XIV	NA	NA	3	3	3
Paper XV	NA	NA	3	3	3
Paper XVI	NA	NA	3	3	3
Level of attainment by Indirect Method 2 (Placement, Self Employed, Progression)					2
Average Level of Attainment					2.9
The target level of attainment 2.5 is achieved					



HEAD OF DEPARTMENT

प्रा. डॉ. चंद्रकांत शं. कांबळे
मराठी विभाग प्रमुख
किसन वीर महाविद्यालय, वाई, जि. सातारा



IQAC CO-ORDINATOR
Coordinator

Internal Quality Assurance Cell
Kisan Veer Mahavidyalaya, Wai
Tal. Wai, Dist. Satara



I/C PRINCIPAL
KISAN VEER MAHAVIDYALAYA
Tal. Wai, Dist. Satara





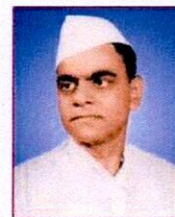
Janata Shikshan Sanstha's

Kisan Veer Mahavidyalaya, Wai

DEPARTMENT OF MARATHI

ATTAINMENT – 2019 -20

CLASS – M.A-II



Level 0	Percentage of student scoring 45 % and above marks is equal to 0 %						
Level 1	Percentage of student scoring 45 % and above marks is greater than 0% but less than 20 %						
Level 2	Percentage of student scoring 45 % and above marks greater than or equal to 20% but less than 40 %						
Level 3	Percentage of student scoring 45 % and above marks greater than or equal to 40 %						
Level of attainment by Direct Method (Internal Evaluation and University Exam)							
Class : M.A. II (Mar) Sem V							
Total no. of students enrolled : 5							
Name of the paper/course	Internal Evaluation			University Exam			
	No. of students scoring 45% or more in Home Assignment	% of students Scoring more than 45 % or more in Home Assignment	Level of Attainment (a)	Total No. of Appeared students	No. of student scoring 45 % or more marks	% of students Scoring more than 45 % or more marks	Level of Attainment
Paper I	5	100	3	5	4	80	3
PaperII	5	100	3	5	5	100	3
Paper III	5	100	3	5	5	100	3
Paper IV	5	100	3	5	5	100	3



Class : M.A. II (Mar) Sem VI

Total no. of students enrolled : 5

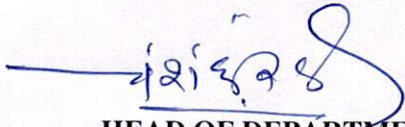
Name of the paper/ course	Internal Evaluation			University Exam			
	No. of students scoring 45% or more in Home Assignment	% of students Scoring more than 45 % or more in Home Assignment	Level of Attainment (a)	Total No. of Appeared students	No. of student scoring 45 % or more marks	% of students Scoring more than 45 % or more marks	Level of Attainment
Paper V	5	100	3	5	5	100	3
Paper VI	5	100	3	5	3	60	3
Paper VII	5	100	3	5	5	100	3
Paper VIII	5	100	3	5	4	80	3

Level of attainment by Indirect Method (Placement, Self Employed, Progression)

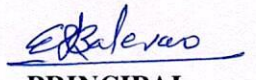
Name of method	No. of students enrolled	No. of students	% of students	Total %	Level of Attainment
Placement	5	0	0	0	0
Progression	5	0	0		
Self employed	5	0	0		



Name of Course/ Paper	Attainment level in Sem III	University Examination	Attainment level in Sem IV	University Examination	Average level of Attainment
	Internal Evaluation	University Examination	Internal Evaluation	University Examination	
Paper I	3	3	NA	NA	3
Paper II	3	3	NA	NA	3
Paper III	3	3	NA	NA	3
Paper IV	3	3	NA	NA	3
Paper V	NA	NA	3	3	3
Paper VI	NA	NA	3	3	3
Paper VII	NA	NA	3	3	3
Paper VIII	NA	NA	3	3	3
Level of attainment by Indirect Method 2 (Placement, Self Employed, Progression)					0
Average Level of Attainment					2.7
The target level of attainment 2.5 is achieved					


HEAD OF DEPARTMENT
 प्रा. डॉ. चंद्रकांत शं. कांबळे
 मराठी विभाग प्रमुख
 किसान वीर महाविद्यालय, वाई, जि. सातारा


IQAC CO-ORDINATOR
 Coordinator
 Internal Quality Assurance Cell
 Kisan Veer Mahavidyalaya, Wai
 Tal. Wai, Dist. Satara


PRINCIPAL
I/C PRINCIPAL
 KISAN VEER MAHAVIDYALAYA
 Tal. Wai, Dist. Satara

